

BAADS Access 303 Checklist before Sailing

Before boarding the boat:

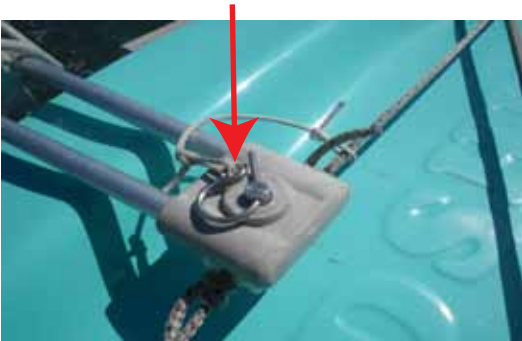
1. **KEEL** Make sure a keel has been put into your boat
2. **TILLER** at the tiller check that clevis pin is lying down and locked
3. **MAIN SHEET** Be sure mainsheet runs through 5 blocks, including the traveler block.
Be sure traveler is suspended above deck.
4. **REEFING LINES** For both jib and mainsail reefing lines, knots must be portside against the bulkhead grommet when the sail is fully unfurled. Look under seat to see that blocks for bungee cord are positioned to keep reefing lines under tension.

In the boat:

5. **JOYSTICK** When you move the joystick, the pressure is even in both directions and the rudders respond accordingly. Moving the joystick should not be too stiff or too loose.
If it is very sloppy, ask for help.
6. **JIB AND MAIN SHEETS** Be sure lines have figure eights knots in place.
7. **PAINTER** Be sure painter is securely attached to the mast. Untangle all lines.
8. **OAD** Always have an oar on board and a bailer.
9. **PERSONAL** Life-jacket, sunglasses, sunscreen, water, windbreaker and whistle.
10. **REEFING DRUM** The screw that fastens main mast to reefing drum must be hand-tight.
unreef by loosening the mainsheet and outhaul and then pulling on the portside (left) reefing line
11. **OUTHAUL** Be sure outhaul cleat grabs the line. If it slips, ask for help.

NOTE: One whistle means Look. Two whistles mean Go in!

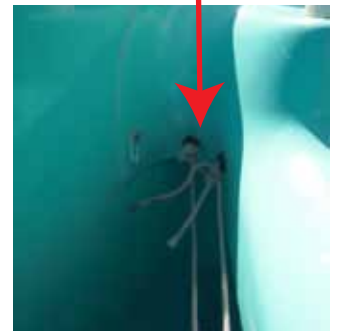
2. Tiller, **locked clevis pin**



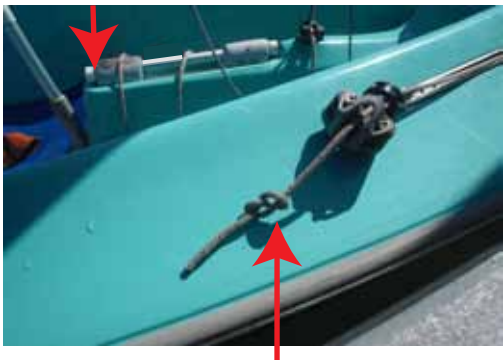
3. Main Sheet, **5 Blocks**



4. Reefing lines, **knots on port side** when unreefed.



1. **Keel**



7. **Painter** around mast



11. Outhaul **Cleat**



6. Jib Sheet, **Figure 8 Knot**